

Product Name: ZX050R2-10GHz 2W Precision Passive Termination SMA 50Ω DC to 10GHz

Product Description: Precision passive SMA termination Load 50 Ohms 1% tolerance 2W designed to meet wideband DC to 18GHz at Max. of -1.2dB insertion loss at 10GHz.; Ideal for HDMI, Display Port, USB, CSI, DSI, USB signal analysis applications.

SMA Plug (SMA Male)
 49.9 Ω
 1% tolerance
 2W termination load

Application: Complementing ZX2xx series HDMI, Display Port, USB test boards from Zebax and all other applications requiring precision termination 50 Ohms load with exceptional low insertion loss.

Mates with : SMA standard connector, (SMA Female)

Electrical Specification TAMB=25°C

FREQUENCY (MHZ)	IMPEDANCE (OHMS)	RETURN LOSS (dB)				Power Rating
		DC-4GHz	4-8GHz	8-12GHz	12-18GHz	
DC-18000 (SMA Male)	50	1.0	1.1	1.2	1.5	2W

Electrical Specification TAMB=25°C

FREQUENCY (MHZ)	IMPEDANCE (OHMS)	VSWR				Power Rating
		DC-3GHz	3-8GHz	8-12GHz	12-18GHz	
DC-18000 (SMA Male)	50	1.05:1	1.10:1	1.15:1	1.25:1	2W

Ratings:

Operating Voltage: 335VRMS Max.
 Operating Temperature: -65°C to +125°C
 Nominal Impedance: 49.9 Ω (Ohms) 1% tolerance
 Frequency Range: DC to 18.0GHz
 Power: 2W

Weight: 0.17 oz (5g)

Connector:

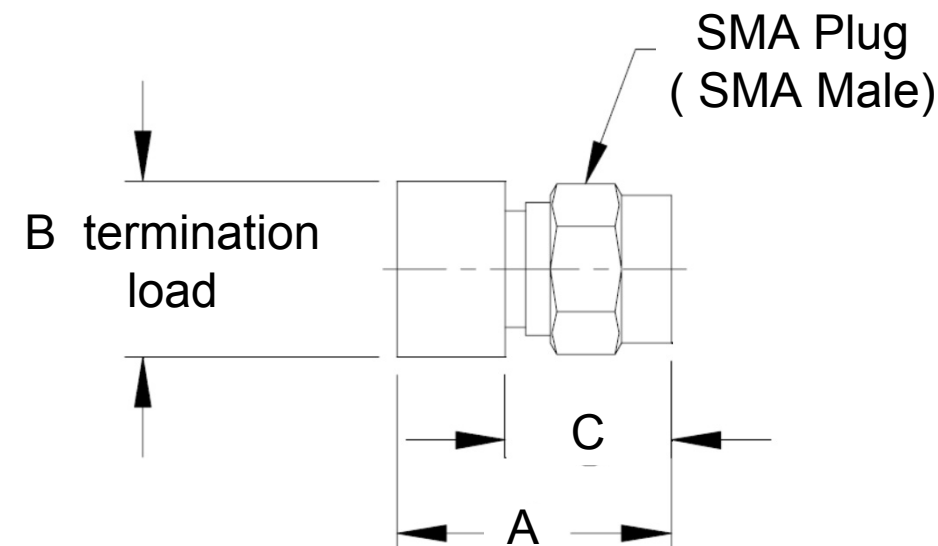
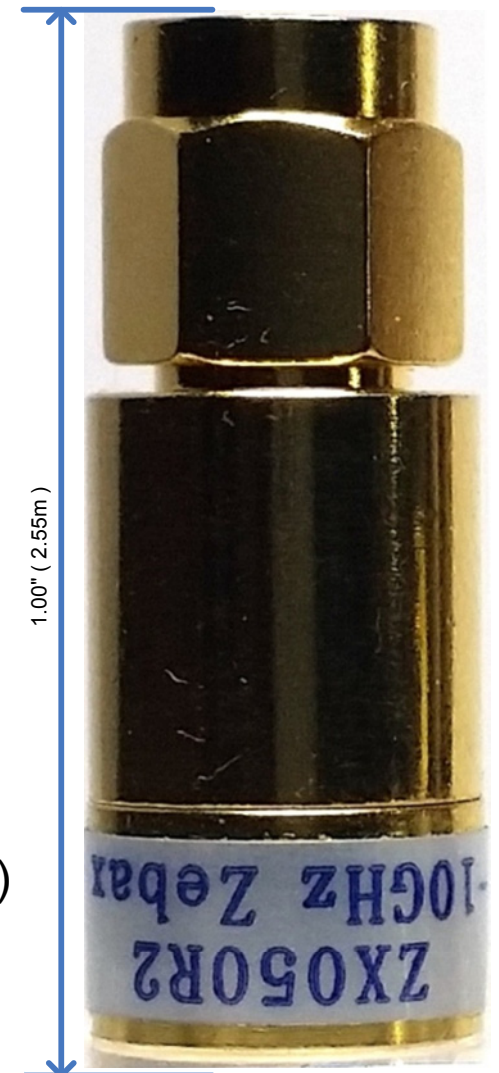
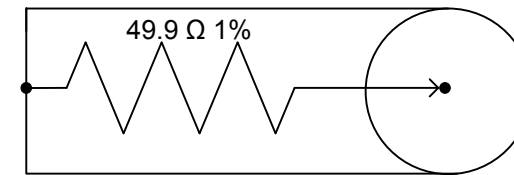
Type: SMA Male
 Inner Conductor Material and Plating: Copper, Gold
 Outer Conductor Material and Plating: Passive Copper, Gold
 Coupling Nut Material and Plating: Passive Copper, gold
 Hex Size: 5/16 inches (8mm)
 Torque: 8 in-lb (0.9Nm)
 Body Material and Plating: Passive copper, Gold
 Dielectric Type: PTFE

Notice

ALL ZEBAX TECHNOLOGIES DESIGN SPECIFICATIONS, DRAWINGS, PUBLICATIONS, AND OTHER DOCUMENTS (TOGETHER AND SEPARATELY, "MATERIALS") ARE BEING PROVIDED "AS IS." ZEBAX MAKES NO WARRANTIES, EXPRESSED, IMPLIED, STATUTORY, OR OTHERWISE WITH RESPECT TO THE MATERIALS, AND EXPRESSLY DISCLAIMS ALL IMPLIED WARRANTIES OF NO INFRINGEMENT, MERCHANTABILITY, AND FITNESS FOR A PARTICULAR PURPOSE.

Information furnished is believed to be accurate and reliable. However, Zebax Technologies assumes no responsibility for the consequences of use of such information or for any infringement of patents or other rights of third parties that may result from its use. Specifications mentioned in this publication are subject to change without notice. This publication replaces all other information previously supplied. Zebax Technologies products are not authorized as in life support devices or systems.

Schematic



CASE	A	B	C	Weight
SMA Plug (SMA Male)	1.0 (25.5mm)	0.38 (9.82mm)	0.36 (9.2mm)	0.17oz (5 Grams)

Dimensions are in inches (mm). Tolerances: 2Pl. ±0.02% 3Pl. ±0.014

Ordering INFO:
 Part Number: ZX050R2-10GHz

Compliance: RoHS Compliant



Note
 ALL ZEBAX products are RoHS compliant and Lead Free unless otherwise indicated.

ZEBAX TECHNOLOGIES SANTA CRUZ, CA U.S.A (831) 222-0717 WWW.ZEBAX.COM		
SPECIFIED DIMENSIONS ARE INCHES (MM). ROHS COMPLIANT	ASSEMBLY DRAWING	
	ITEM: ZX050R2-10GHz	
DESCRIPTION: Precision Passive SMA termination load 50 Ohms – 2W DC to 10GHz		
CHECKED: M. MARINA	DRAWN: SLAVIK	REVISION: 1.0 SHEET: 1 OF 1