

NEWS LETTER

ZX050— Directional Coupler RF

As part of customer support and continuation of ZX050 module family, Zebax introduces the RF Directional Coupler breakout adapters. The modules are offered without the coupler to customers for their characterization, instrumentation applications. Additionally— Zebax offers assembly support of any customer requiring fully assembled modules. All modules are offered fully assembled with the SMA connectors and the onboard resistive load, **49.9 Ω 0.05%**

Fully supported RF Directional Couplers from **Murata** and **AVX RF** as well any other vendor supporting the packages as listed below:

AVX RF: CP0402, CP0603, DB0805

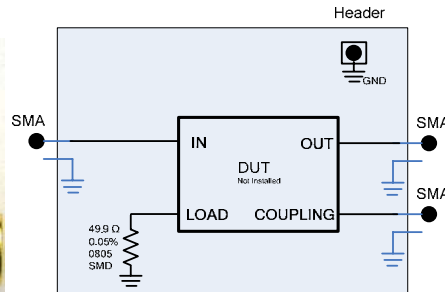
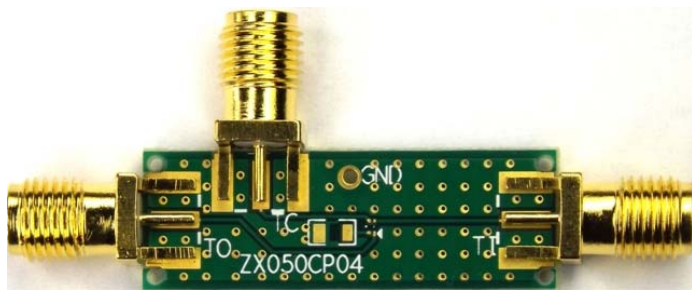
Murata Chip Multilayer Hybrid Couplers: : LDC15, LDC18 and LDC21

Below are selection of existing Modules as Zebax standard stock item.

ZX050-CP0402 Directional Coupler

ZX050-CP0402 Directional coupler breakout is general purpose breakout adapter enabling instrumentation applications as well as characterization of the directional coupler. Designed with 50 Ω trace impedance using 4 layer PCB and **49.9 Ω 0.05%** onboard load resistor. ZX050-CP0402 meeting GHz performance at <<0.1dB signal loss making it ideal for any project .

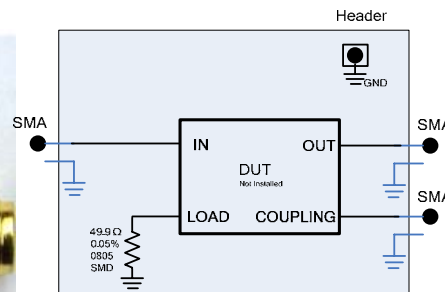
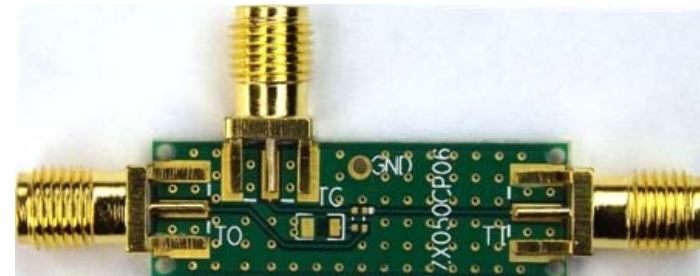
Application: Device testing, bringup, characterization, instrumentation and performance analysis of any SMD device, RF testing



ZX050-CP0603 Directional Coupler

ZX050-CP0603 Directional coupler breakout is general purpose breakout adapter enabling instrumentation applications as well as characterization of the directional coupler. Designed with 50 Ω trace impedance using 4 layer PCB and **49.9 Ω 0.05%** onboard load resistor. ZX050-CP0603 meeting GHz performance at <<0.1dB signal loss making it ideal for any project .

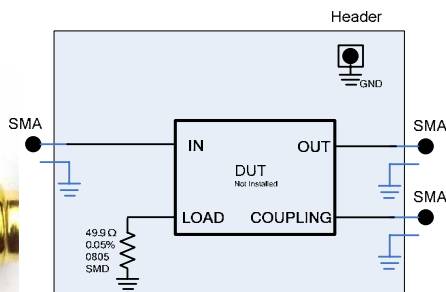
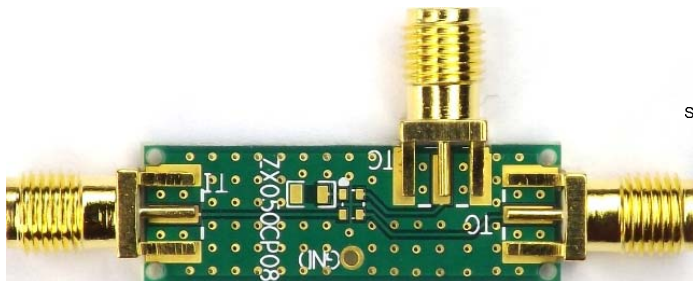
Application: Device testing, bringup, characterization, instrumentation and performance analysis of any SMD device, RF testing



ZX050-DB0805 Directional Coupler

[ZX050-DB0805](#) Directional coupler breakout is general purpose breakout adapter enabling instrumentation applications as well as characterization of the directional coupler. Designed with $50\ \Omega$ trace impedance using 4 layer PCB and $49.9\ \Omega$ 0.05% onboard load resistor. ZX050-DB0805 meeting GHz performance at $<<0.1\text{dB}$ signal loss making it ideal for any project .

Application: Device testing, bringup, characterization, instrumentation and performance analysis of any SMD device, RF testing



ZX050-LDC151821 Directional Coupler

[ZX050-LDC151821](#) Directional coupler breakout is general purpose breakout adapter enabling instrumentation applications as well as characterization of the directional coupler. Designed with $50\ \Omega$ trace impedance using 4 layer PCB and $49.9\ \Omega$ 0.05% onboard load resistor. ZX050-LDC151821 meeting GHz performance at $<<0.1\text{dB}$ signal loss making it ideal for any project. The module offers footprints for the LDC15, LDC18 and LDC21 packages on one module.

Application: Device testing, bringup, characterization, instrumentation and performance analysis of any SMD device, RF testing

